

KUBUS

Accumulation suction cover (without lighting and fat filters)

The KUBUS accumulation suction covers are primarily used for suction from convection ovens and dishwashers in large kitchens, where no fat separation in fat filters and lighting are required.

They are profitably used in connection with DiNER hoods, where the accumulation hood outlet can be taken through a flap (optional part of DiNER) into a suction part, and the heat energy can be used in the DiNER heat recovery exchanger.

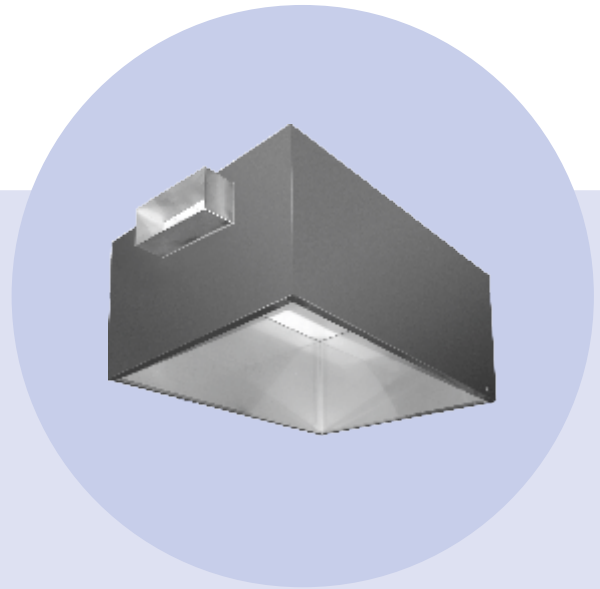
If appropriate, the accumulation cover can be connected directly to the suction piping (profitably, through the automatically controlled flap).

If ordered, the covers can be equipped with the operation automatic control sensors.

The accumulation suction covers are delivered in two basic heights - 465 mm (identical with STANDARD hoods), and 690 mm (identical with DiNER hoods).

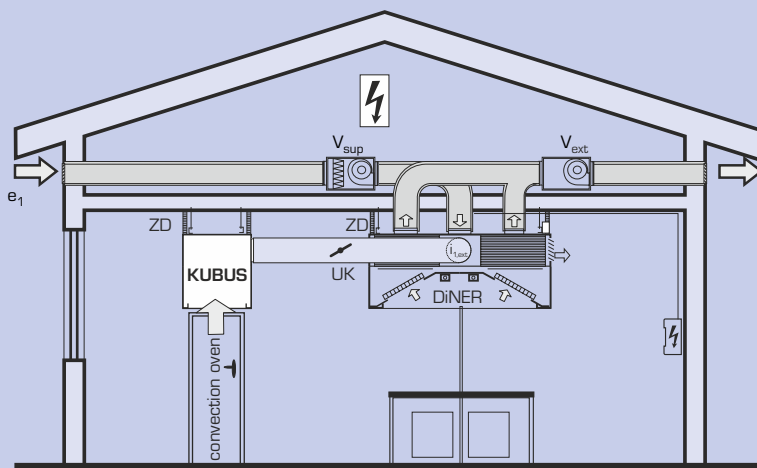
The KUBUS suction covers are exclusively delivered as a whole, made from stainless steel plates as per ČSN 17240 (AISI 304). Circular or rectangular suction branches are located on the top or on the side.

The branch dimensions are determined according to the sucked air flow rate based on the calculation (ATREA selection software).



KUBUS

FUNCTIONAL DIAGRAM OF THE ACCUMULATION SUCTION COVER



- $i_{1,ext}$... side connection branch of the DiNER hood
- UK ... switch controlled closing damper (optional accessory)
- ZD ... cover of the area above the hood up to the ceiling (such as plasterboard)
- V_{ods} ... exhaust fan (e.g. SVF)
- V_{pf} ... supply fan with filter (e.g. SVF)

SELECTION SOFTWARE



A special selection software can also be used for designing the hoods, created in compliance with VDI 2052 directive (Germany).

You can find this program on our website www.atrea.eu.

Atrea[®]

KITCHEN VENTILATION

ATREA s.r.o., Čs. armády 32
466 05 Jablonec n. Nisou
Czech Republic

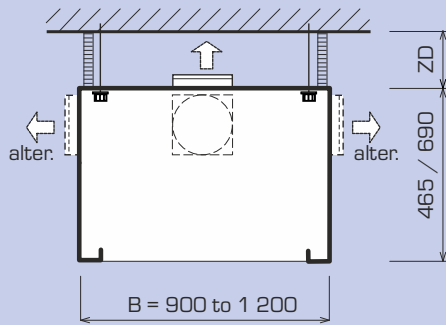


www.atrea.eu

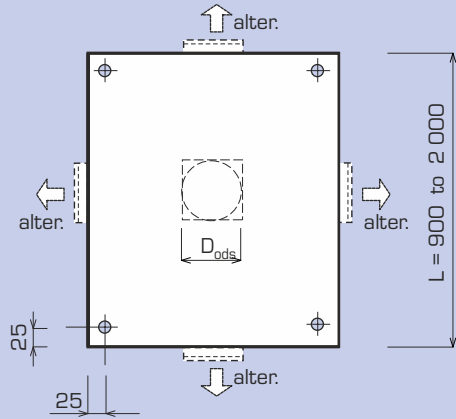
Phone: +420 483 368 111
Fax: +420 483 368 112
E-mail: atrea@atrea.eu

DIMENSION DIAGRAM

side view



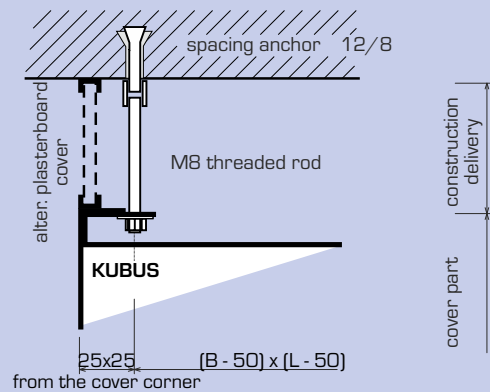
top view



- L** ... cover length
- B** ... cover width
- D_{ods}** ... diameter of outlet ports for the connection of circular or rectangular piping

ANCHORING TO THE CEILING

The accumulation suction covers are equipped with holes including spread panels to be hung on M8 threaded rods anchored to the ceiling using $\varnothing 12 / 8$ mm spacer anchors (not in the scope of delivery)



BASIC DIMENSIONS

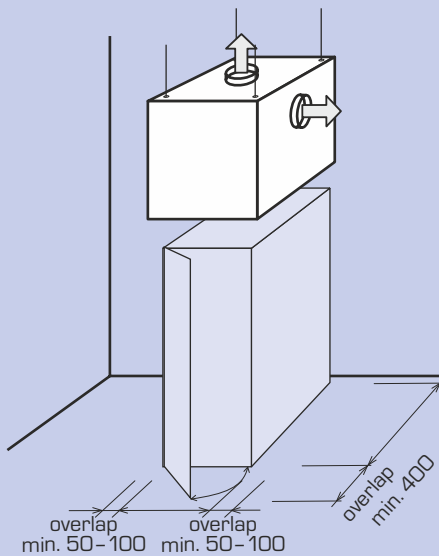
| length L (mm) | width B (mm) | height (mm) |
|------------------|-------------------|----------------|
| 900 | 900, 1 000, 1 250 | 465, 690 |
| 1 000 | 900, 1 000, 1 250 | 465, 690 |
| 1 250 | 900, 1 000, 1 250 | 465, 690 |
| 1 500 | 900, 1 000, 1 250 | 465, 690 |
| 1 750 | 900, 1 000, 1 250 | 465, 690 |
| 2 000 | 900, 1 000, 1 250 | 465, 690 |

If ordered, covers can be delivered with atypical dimensions in the following scope:

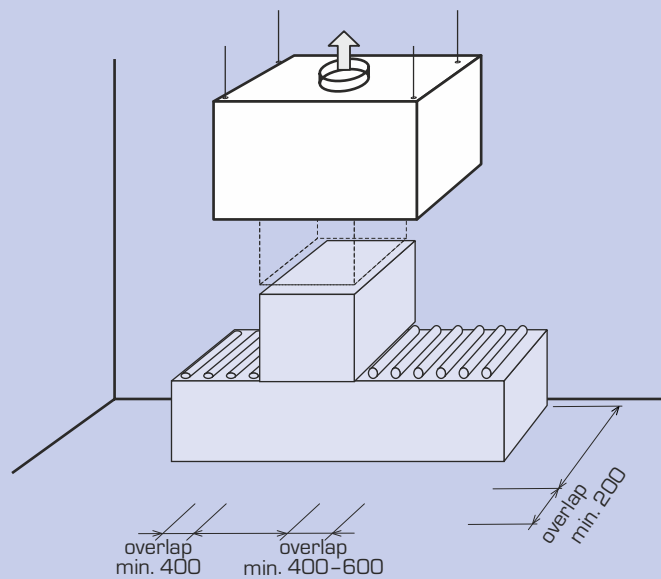
length L = 900 to 2 000 mm
width B = 900 to 1 250 mm

ACCUMULATION COVER DIMENSION DETERMINATION

a) convection ovens and similar devices with front door



b) dishwasher



ORDERING DATA

KUBUS accumulation cover – dimension L x B (mm) – D_{ex} (mm), for the port location, see drawing in the attachment